



imagination at work

# GE Micro Logger 2

Pressure, Temperature and Pulse Data Logger



- **Logged data parameters available**
  - Minimum, maximum and average pressure on both the measurement transducer and the monitor transducer
  - Minimum, maximum and average temperature
  - Battery Voltage
  - Volume Data if Pulse Logging
- **Logs fully configurable in increments from 1 minute to 1 month**
- **Nominal 5 year battery life (standard alkaline sealed battery pack)**
- **7 Measurement and Monitor transducer options**
  - 30 PSI, 180 PSI and 350 PSI gauge
  - 30 PSI, 180 PSI, 450 PSI and 1000 PSI absolute
- **Fully compatible with both the GSM and Line Micro modems. Email capability via the GE GSM/GPRS modem**

The GE Micro Logger 2 is an extension of the successful Micro Series product line. It utilizes the same user friendly Micro Corrector User Terminal Software and communication cables and, is designed to be installed on any part of the distribution or transmission system requiring accurate, safe, and reliable data logging and network status monitoring.

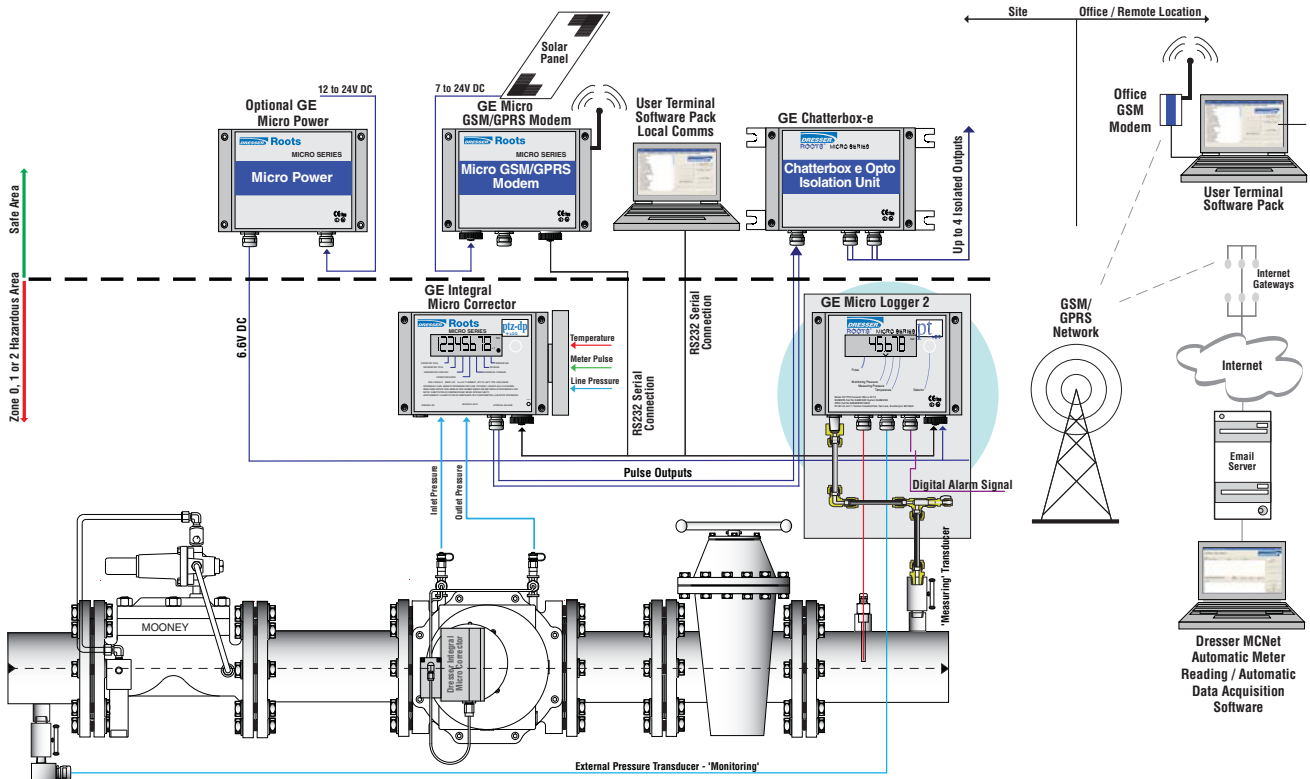


Figure 1: Systems Schematic

## Technical Specifications

### PRESSURE MEASUREMENT RESOLUTION

- Pressure:** 0.01 psi (1 mbar)
- Accuracy:**  $\pm 0.25\%$  reading
- Long Term Stability :** 0.1% per year (non-cumulative)
- Measurement Resolution:** 0.01 psi (1 mbar)

### GAUGE TRANSDUCERS

- 0-30 psi (2 bar)
- 0-180 psi (12 bar)
- 0-350 psi (24 bar)

### ABSOLUTE TRANSDUCERS

- 0-30 psi (2 bar)
- 0-80 psi (12 bar)
- 0-450 psi (30 bar)
- 0-1000 psi (70 bar)

### TEMPERATURE MEASUREMENT RESOLUTION

- Temperature:** 0.1 F° (0.1 C°)
- Accuracy:**  $\pm 0.9$  F° (0.5 C°)
- Operating Temperature Range:** -40 °F to +140 °F (-40 °C to +60 °C)
- Long Term Stability:** 0.3 F° per year (0.2 C°)
- Temperature Probe Type:** PT100 (Class A) 4-wire with armored cable

### TEMPERATURE PROBES

- 2" or 8-1/4" probe insertion lengths with either 5 foot or 10 foot armored cable lengths

### BATTERY

- Sealed Alkaline Pack:** 5 years nominal life with 4 size C alkaline cells
- Low Battery Reserve:** 2 months minimum

### INPUTS

- Volume:** Reed Switch; Solid State L.F. Weigand Pulse Type
- Pressure:** Proprietary semiconductor strain gauge
- Temperature:** ITS-90 Platinum 100 $\Omega$  RTD  
 $\alpha=0.00385$

### LCD DISPLAY

- User selectable parameters

### PULSE OUTPUTS

#### Corrected, Uncorrected and Alarm/Fault

- Loop Voltage:** 5-15 Vdc
- Loop Current:** 10 mA maximum
- Pulse Width:** User selectable options of 125, 187, or 312 mS
- On/Off Resistance:**  $<10_{\_}/> 10M\Omega$
- Isolation:** 2,500 Vdc

### ENVIRONMENT

- Storage Temperature:** -58 °F to +176 °F (-50 °C to +80 °C)
- Humidity:** Up to 95% sustained outdoor exposure

### ENCLOSURE

- NEMA 4X (IP66)

### INTRINSIC SAFETY

- Designed Intrinsically Safe for Class I, Division 1, Groups C and D
- Zone 0:** EEX ia IIC T4 Tamb = -40 °C to +60 °C
- Class-I, Division-1, Group C and D:** BAS98ATEX 1083

### ELECTROMAGNETIC/RADIO FREQUENCY IMMUNITY

- FCC Class B:** Meets EMI/RFI immunity at 10 V/m, 0.1 to 1,000 MHz
- EN50081-1 and EN5088-2
- Other:** ISO-9001, CE Mark

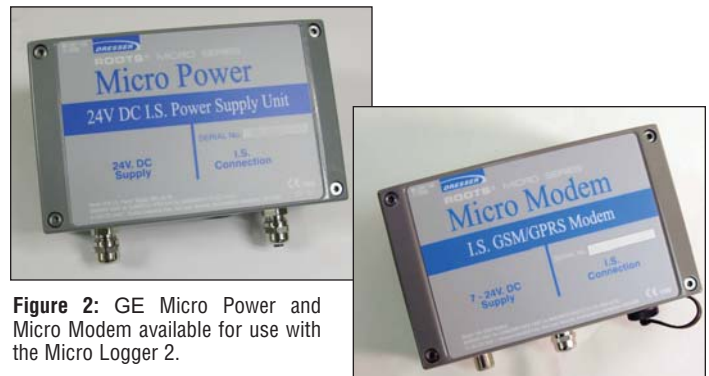


Figure 2: GE Micro Power and Micro Modem available for use with the Micro Logger 2.



imagination at work